

ALUMINIUM FORMWORK SYSTEM



CONTENTS

01 ABOUT GETO

COMPANY PROFILE & DEVELOPMENT HISTORY	P4-5
GETO ADVANTAGES	P6-11

02 ALUMINIUM FORMWORK INTRODUCTION

ALUMINIUM FORMWORK PROFILE	P13
COMPARISON OF ALUMINIUM FORMWORK & STEEL FORMWORK & TIMBER FORMWORK	P14
ALUMINIUM FORMWORK ADVANTAGES	P15

03 GETO ALUMINIUM FORMWORK SYSTEM

GETO ALUMINIUM FORMWORK SYSTEMS	P17-18
SYSTEM FEATURES	P19-20
COMPONENTS	P21-26
ACCESSORIES	P27-30
QUICK-DECK SYSTEM	P31-32
INSTALLATION INSTRUCTION	P33-34

04 PROJECT REFERENCES

TECHNICAL SOLUTIONS	P36-43
GETO PROJECTS	P44
PROJECTS IN ASIA	P45-47
PROJECTS IN MIDDLE EAST	P48-49
PROJECTS IN AMERICAS	P50-55



ABOUT GETO

Why Do I Choose GETO?

COMPANY PROFILE & DEVELOPMENT HISTORY

GETO is mainly engaged in green construction and new energy.

Green prefabricated building products include aluminium formwork, steel formwork, steel-framed timber formwork, climbing systems, fair-faced concrete formwork, infrastructure formwork and scaffolding products; prefabricated steel structures, assembly precast concrete components, and modular building (including PC and steel structures).

The main focus of new energy is investment, construction, and operation of "Photovoltaics, Storage, and Charging" projects, while providing the "Green Energy Future Living" one-stop residential energy solution.

In 2021, GETO was listed on the ChiNext board of the Shenzhen Stock Exchange in China. We have established 12 production bases around the world and registered 32 international trademarks in different countries and regions.

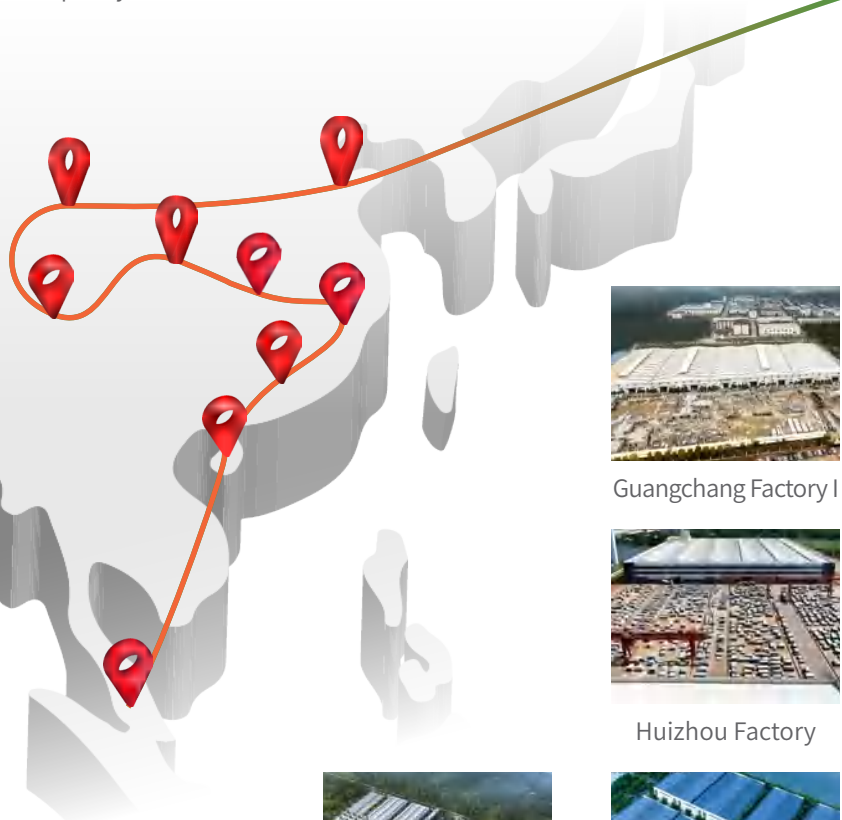


GETO ADVANTAGES

PRODUCTION STRENGTH

GETO Global management headquarters is located in Zhongshan, Guangdong, the hinterland of the Guangdong-Hong Kong-Macao Greater Bay Area.

12 production bases worldwide, aluminium formwork annual production capacity of 5 million m².



Jiangmen Factory



Guangchang Factory I



Guangchang Factory II



Huizhou Factory



Weifang Factory



Tongnan Factory



Dingxi Factory



Lingao Factory



Xianning Factory



Nilai Factory,
Malaysia



Singapore Factory



Saudi Arabia Factory



GETO INTELLIGENT MANUFACTURING

Intelligent manufacturing greatly enhances efficiency, including independent R&D of the existing formwork renovation production line, formwork automation production line, and friction stir welding (FSW).



GETO ADVANTAGES

INTEGRATED PRODUCT SOLUTIONS

GETO offers one-stop package solutions for its product and service offerings. Products in GETO's one-stop package include the building formwork and scaffolding product series, prefabricated building product series, fair-faced concrete project series, photovoltaic new energy, and infrastructure formwork.



WHOLE-CHAIN SERVICES

GETO's whole-chain service offerings include on-site assistance, logistics, design and consultation, monitoring and measuring services. Our service team is diverse, with staff from different ethnicities and languages.



PRODUCT CERTIFICATION

Our aluminium formwork products obtain carbon footprint certification; obtain "BAND-2" international highest qualification honor in the strict evaluation of Singapore government BCA; obtain ISO 9001, ISO 14001, and ISO 45001 certification. PC components products get green product certification.

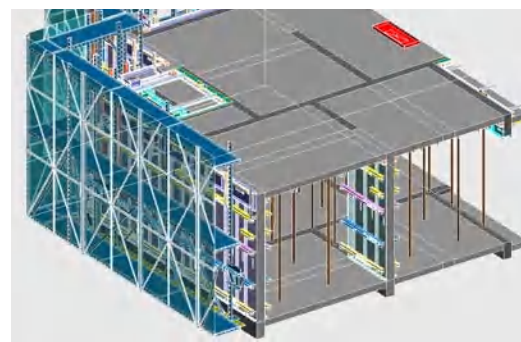


GETO ADVANTAGES

INDEPENDENT R & D SOFTWARE

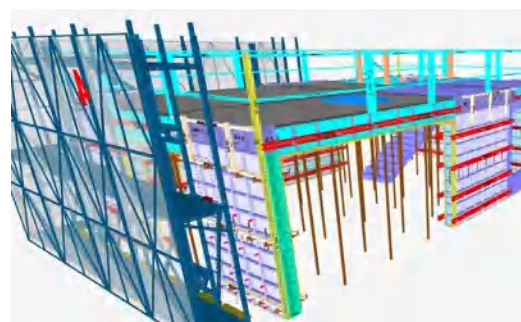
GETO-BIM AUTOMATIC MODULATION SOFTWARE

Zero defects and high efficiency in product design, eliminate the need for factory preassembly, and packing by construction zones, leading to faster installation on the first floor.



GETO 3D MODEL MEMORY OPTIMIZATION VISUALIZATION PLATFORM

The QR code is scanned on the project site to quickly locate the material position and help workers accurately assemble the formwork.



GETO-VR INSPECTION SOFTWARE

VR virtual remote acceptance saves customers the trouble of on-site acceptance of the factory.



DIGITAL MANAGEMENT

GT-MS INFORMATION MANAGEMENT SYSTEM

Created big data management throughout the whole supply chain's business processes such as marketing, procurement, deepening, design, production, warehousing, engineering services and finance.



MATERIAL CODING SCAN MANAGEMENT SYSTEM

According to the BOM, the output of the BIM, the materials are uniformly coded. By scanning codes with PDA, we can achieve real-time querying of warehouse materials and effective management of the "receiving, using, and storing" process.



ALUMINIUM FORMWORK INTRODUCTION

Why Do We Choose Aluminium Formwork?

ALUMINIUM FORMWORK PROFILE

Aluminium formwork is a new generation of construction formwork after timber and steel formwork. Aluminium alloy profile is the main material and it is made into formwork through machining, welding, and other processes, which is suitable for concrete engineering. Aluminium formwork can be assembled freely according to different structures and sizes. Its design and application is the innovation of formwork technology.



Aluminium Formwork Forming Effect



Aluminium Formwork on Site



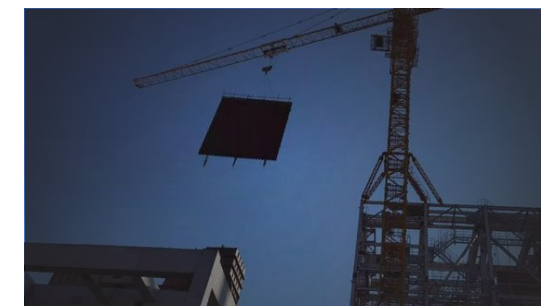
Timber Formwork Forming Effect



Timber Formwork on Site



Steel Formwork Forming Effect



Steel Formwork on Site

COMPARISON OF ALUMINIUM FORMWORK & STEEL FORMWORK & TIMBER FORMWORK

Characteristics	Steel Formwork	Timber Formwork	Aluminium Formwork
Material Performance			
Average weight	35-85kg/m²	10.5kg/m²	25-27kg/m²
Loading capacity	30-60kN/m²	30kN/m²	60kN/m²
Tensile strength	≥ 370MPa	≥ 120MPa	≥ 260MPa
Characteristics of Installation Process			
Installation difficulty	Low	High	Lowest
Labour intensity	High	High	Low
Security risk	High	High	Low
Depend on lifting machinery or not	Need	Need	Needless
Concrete Forming Effect			
Concrete surface quality	Rough, clean	Rough	Glossy, smooth
Need to plaster or not	Needless	Need	Needless
Precision	High	Low	High
Comparison of Cost			
Amortization cost	High	High	Low
Scrap value	Middle	None	None
Environmental Protection			
Environmentally friendly	Yes	No	Yes
Generate construction waste or not	None	Much	None
Common formwork usage times	30-40 times	3-5 times	150-300 times
Efficiency			
Efficiency	8-10 days / Floor	10-12 days / Floor	4-6 days / Floor

*The data above are from GETO's construction experience.

ALUMINIUM FORMWORK ADVANTAGES

EXCELLENT FORMING EFFECT

1. Large areas of single panels, less patchwork;
2. High precision;
3. High bearing capacity;
4. High concrete surface quality, easy to reach the quality standards of fair-faced concrete construction that require no plastering.

LESS CONSTRUCTION COST

1. Reduce the integrated costs with high utilization;
2. Save labor costs due to the high erection speed;
3. Reduce heavy equipment leasing expenses such as cranes;
4. Reduce the cost of plastering and save the cost of decoration;
5. The scrap value is high.

SPEED

1. Workers can carry and assemble the formwork efficiently without any equipment due to the light weight;
2. The assembly is simple and flexible like building blocks.

SAFETY

1. The material of aluminium formwork has the characteristics of high strength, high bearing capacity, and not easy to deform;
2. After the system is assembled, a whole frame is formed with high stability;
3. No need of cranes or aerial work, decreasing the risk of falling accidents.

ENVIRONMENTALLY FRIENDLY

1. The service life of aluminium formwork can reach 200-300 times, the utilization is high;
2. The scrap aluminium formwork can be recycled, contributing to environmental protection;
3. Reduce the construction waste.

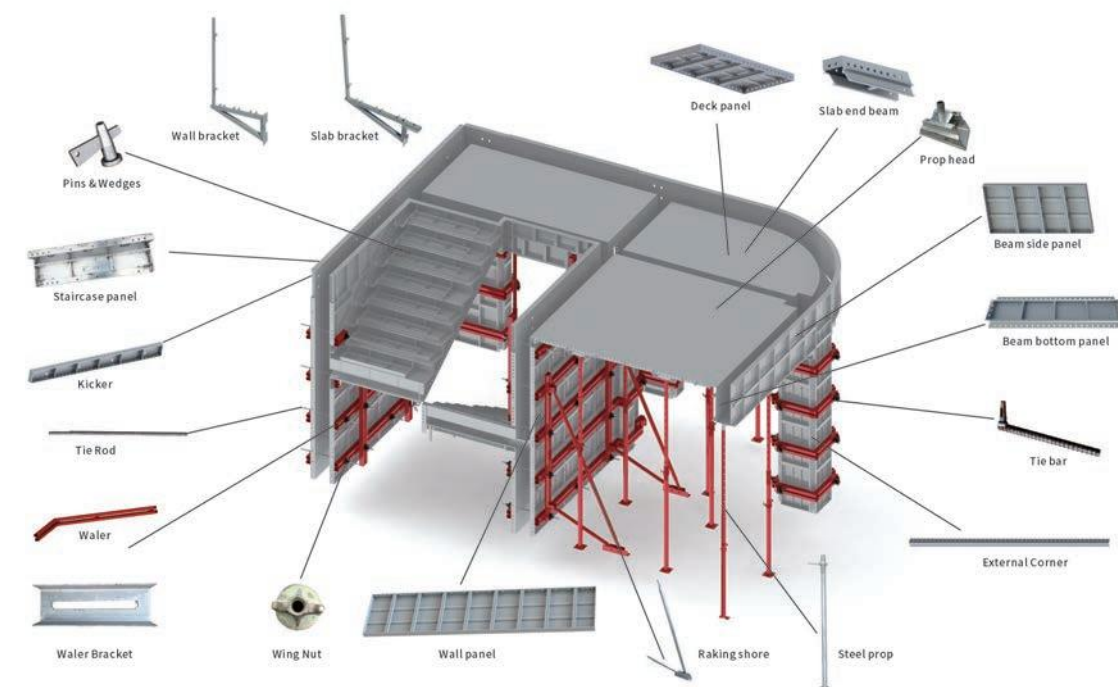
GETO ALUMINIUM FORMWORK SYSTEM

What Is GETO Aluminium Formwork?

GETO ALUMINIUM FORMWORK SYSTEMS

TIE-ROD SYSTEM

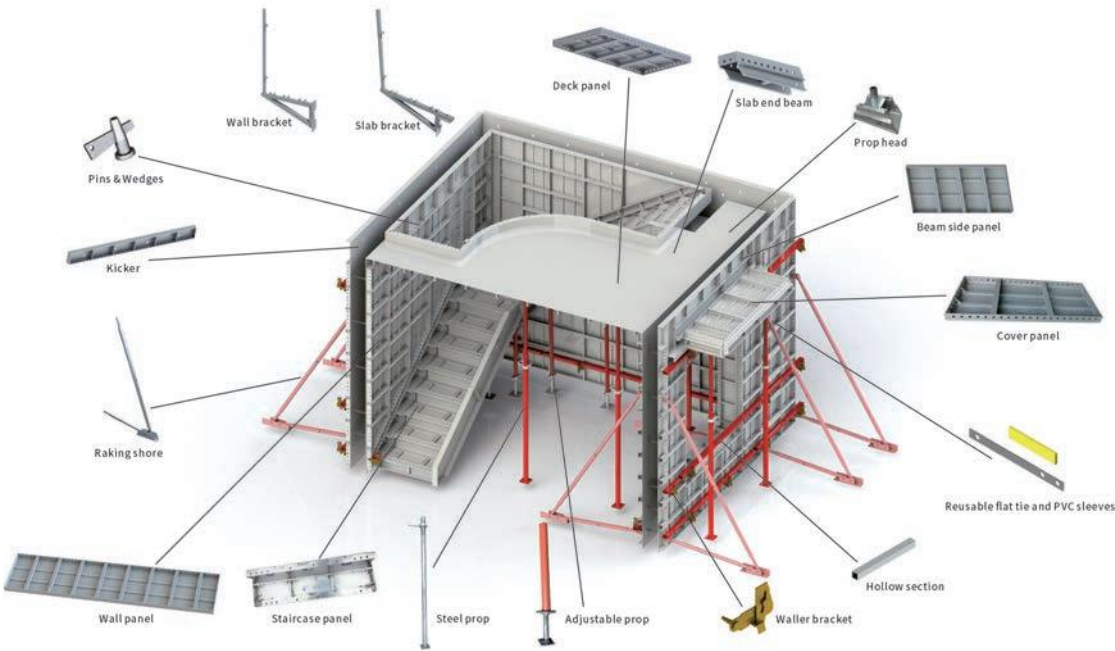
The forming effect of the tie-rod reinforcement system is very smooth. The tie-rod reinforcement system is more suitable for the refurbishment project with different structures and the project with wall thickness structures larger than 400mm.



GETO ALUMINIUM FORMWORK SYSTEMS

FLAT-TIE SYSTEM

The formwork with the flat-tie reinforcement system is free of drilling, with the good vertical casting effect and fewer installation accessories, reducing the installation workload of workers, which is more in line with the use habits of overseas workers.



Statement:

*It is the normal phenomenon that the dirt spots appear on the surface of aluminium alloy formwork due to oxidation. It will not affect the quality of the material and the concrete outcome quality.

**In order to reduce the phenomenon of oxidation of aluminium formwork can choose to powder coating treatment on the surface of aluminium formwork, but due to the differences in actual usage on site, powder coating aluminium formwork also exists the risk of powder coming off.

SYSTEM FEATURES

Item	Specification	
Aluminium Alloy (6061-T6)	Poisson's ratio (Va)	0.3
	Density (ρ)	2.7g/cm ³
	Elasticity modulus (Ea)	70000N/mm ²
	Yield strength (F _a)	200 N/mm ²
	Shear strength (F _{va})	115N/mm ²
Composition	Inner & Outer wall paneland corner panel	
	Beam bottom & side panel and corner panel	
	Slab panel & prop head and corner panel	
	Staircase panel	
Alloy Temper	6061-T6	
Material Type	Complete extrusion	
Main Welding Type	Friction Stir Welding	
Thickness of Panel	4mm	
Thickness of Frame	8mm	
Height of Frame	63.5 / 65mm	
Standard Wall Panel Width	50mm to 600mm	
Standard Wall Panel Height	2,400mm	
Standard Slab Panel Size	600mm X 1,200mm	
Weight of Aluminium Panel	25kg/sq.m	
Aluminium Formwork Surface Treatment	Napping and spray mold retention agent	
Aluminium Profile Hardness	>Webster 15 degrees	
Standard Prop	Adjustable steel prop	
Material of Accessories	Steel Q195-Q235	

SYSTEM FEATURES

FRICTION STIR WELDING (FSW)

TECHNICAL BACKGROUND

Developed in 1991 in Cambridge, United Kingdom by The Welding Institute(TWI). During welding, stir welding head will move through the connection joint and turn it to the welding joint. This welding technology applies high pressure between 2 plates and welds them through the heat caused by the friction.

ADVANTAGES OF FSW

Application.

As a solid state process it can be applied to all the major aluminium alloys and Bimetallic (aluminium/magnesium) welding is possible. [bimetallic: different metallic properties]

Optimize the welding process.

Avoid problems of hot cracking, porosity, element loss, etc. common to aluminium fusion welding processes. No shielding gas or filler wire is required for aluminium alloys.

Excellent mechanical properties.

Reduce distortion.

The absence of fusion removes much of the thermal contraction associated with solidification and cooling, leading to significant reductions in distortion.

Workplace friendly.

There is no ultraviolet or electromagnetic radiation hazards as the absence of arc removes these hazards from the process; the process is no noisier than a milling machine of similar power, and generates virtually zero spatter, fume and other pollutants.

Reduce errors caused by manual operation.

As a mechanized process, FSW does not rely on special welding skills; indeed manual intervention is seldom required.



COMPONENTS

WALL & COLUMN WALL PANEL



REMARKS:

1. Without external corner at both sides
2. Without Rocker at the bottom

DESCRIPTION:

Wall Panel is used to support vertical structure like wall and column. Usually the bottom part is linked to Rockers with Bolt & Nut for easy dismantling while the top is connected to Beam Joint for beam or Slab Joint with Pin & Wedge.

Item W(WxH)	Weight (kg)
600 W 2400	27.91
500 W 2400	24.04
400 W 2400	20.32
350 W 2400	17.93
300 W 2400	14.89
250 W 2400	13.13
200 W 2400	11.44
150 W 2400	9.35
125 W 2400	8.56
100 W 2400	7.76
50 W 2400	6.18

WALL & COLUMN WALL END PANEL



DESCRIPTION:

Fill up the formwork area, where standard wall panels unable to fit at the horizontal-end sides of the formwork system.

Item WS(WxH)	Weight (kg)
400 WS 2400	30.80
350 WS 2400	27.01
300 WS 2400	25.34
250 WS 2400	23.57
200 WS 2400	18.26
150 WS 2400	19.79
125 WS 2400	19.01
100 WS 2400	18.21

WALL & COLUMN EXTERNAL CORNER JOINT



DESCRIPTION:

Used to connect wall panels at external corner area.

Item EC(H)	Weight (kg)
63.5×63.5 EC 2400	5.24
63.5×63.5 EC 600	1.31

COMPONENTS

WALL & COLUMN WALL TOP PANEL



DESCRIPTION:
Wall top panel is used to connect the standard wall panel to satisfy the storey.

Item WT(WxH)	Weight (kg)
600 WT 600	7.44
500 WT 600	6.39
400 WT 600	5.38
350 WT 600	4.32
300 WT 600	3.87
250 WT 600	3.39
200 WT 600	2.94
150 WT 600	2.47
125 WT 600	2.24
100 WT 600	2.00
50 WT 600	1.53

WALL & COLUMN INTERNAL CORNER JOINT



DESCRIPTION:
Internal corner joint is used to connect wall panel and wall end panel at internal corner. The height of IC are equal to the wall panel height.

Item(A1+A2) IC (H)	Weight (kg)
100×100 IC 2400	14.12
100×120 IC 2400	15.32
100×125 IC 2400	15.62
100×130 IC 2400	16.30
100×140 IC 2400	16.51
100×150 IC 2400	17.12
100×160 IC 2400	17.33
150×150 IC 2400	20.12

WALL & COLUMN ROCKER



DESCRIPTION:
Used to connect wall panels at external corner area.

Item R (H+W)	Weight (kg)
63.5 R 45 600	1.02
63.5 R 50 600	1.06

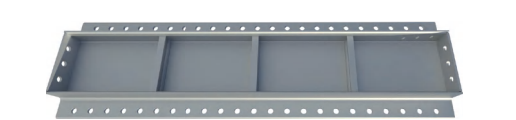
WALL & COLUMN KICKER



DESCRIPTION:
Kickers are fixed on the external wall panels with kicker screws before concrete pouring. The function of kickers is to support the external wall panels for next floor.

Item K (H+W)	Weight (kg)
350 K 1800	12.59
350 K 1200	8.50
300 K 1800	11.30
300 K 1200	7.62
150 K 1800	7.31
150 K 1200	4.92

BEAM BEAM SOFFIT



REMARKS:
With external corner at both sides.

DESCRIPTION:
Beam soffit issued to support Beam.

Item PS(HxL)	Weight (kg)
400 PS 1100	14.46
300 PS 1100	11.69
250 PS 1100	10.84
200 PS 1100	8.37
150 PS 1100	9.20
125 PS 1100	8.79

BEAM BEAM SOFFIT



REMARKS:
With external corner at both sides.

DESCRIPTION:
Beam soffit issued to support Beam.

Item P(HxL)	Weight (kg)
400 P 1100	9.66
300 P 1100	7.05
250 P 1100	6.20
200 P 1100	5.39
150 P 1100	4.56
125 P 1100	4.15

COMPONENTS

BEAM BEAM PROP HEAD

DESCRIPTION:
Panel to support beam and use to join two Beam Bottom with Pin & Wedge.



Item DP(HxL)	Weight (kg)
300 DP 300	2.51
200 DP 300	1.98
200 DP 250	1.72
200 DP 200	1.47
150 DP 300	1.71
150 DP 200	1.26
150 DP 150	1.03

BEAM BEAM HEAD

DESCRIPTION:
Use to join the beams together (Middle beam and/ or End beam), the steel props will be placed under the prop head.



Item PH(HxL)	Weight (kg)
150 PH 330	1.74
150 PH 280	1.50
150 PH 230	1.26

BEAM BEAM CORNER JOINT

DESCRIPTION:
Use for internal corners usually at beams. Connect to other panels using Pin & Wedge.



Item (A1+A2)C(L)	Weight (kg)
100×100 C 200	2.24
100×120 C 200	2.57
100×125 C 200	2.64
100×130 C 200	2.74
100×140 C 200	2.85
100×150 C 200	2.99
100×160 C 200	3.13
150×150 C 200	3.70

BEAM BEAM OUTER CORNER

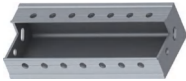
DESCRIPTION:
Use for internal corners usually at beams. Connect to other panels using Pin & Wedge.



Item (A1+A2) LC (L1+L2)	Weight (kg)
100×100 LC 400+400	4.76
100×150 LC 400+400	5.87
150×150 LC 400+400	7.00

BEAM BEAM INTERNAL CORNER

DESCRIPTION:
Internal corner joint is used to connect panels at internal corner. The height of IC are equal to the beam side panel height.



Item (A1+A2) C (H)	Weight (kg)
100×100 C 400	2.05
100×150 C 400	2.42
150×150 C 400	2.79
100×100 C 600	3.17
100×150 C 600	3.77
150×150 C 600	4.37

BEAM BEAM SIDE PANEL



DESCRIPTION:
Use for internal corners usually at beams. Connect to other panels using Pin & Wedge.

Item P(HxL)	Weight (kg)
400 P 1100	9.66
300 P 1100	7.05
200 P 1100	5.40
150 P 1100	4.56
100 P 1100	3.73

SLAB PANEL



DESCRIPTION:
The slab panel will be used to support the concrete weight during concrete pouring and casting.

ItemP(WxL)	Weight (kg)
600 P 1200	14.26
450 P 1200	10.97
400 P 1200	10.36
300 P 1200	7.29
200 P 1200	6.91

SLAB SLAB MIDDLE BEAM

DESCRIPTION:
Use to join the prop heads, the middle beam supports the slab panels.



Item MB	Weight (kg)
150 MB 1050	8.41
150 MB 900	7.16

COMPONENTS

SLAB SLAB END BEAM

DESCRIPTION:

Use to join the prop heads, the middle beam supports the slab panels.



Item EB	Weight (kg)
150 EB 300	2.42
150 EB 400	3.20
150 EB 500	3.97
150 EB 600	4.75
150 EB 700	5.53
150 EB 800	6.31

BEAM SLAB CORNER JOINT

DESCRIPTION:

The slab corner joint will be used to connect the wall panel and slab panel.



Item (A1+A2) C (L)	Weight (kg)
100×100 C 1800	9.95
100×120 C 1800	10.79
100×125 C 1800	10.99
100×130 C 1800	11.48
100×140 C 1800	11.60
100×150 C 1800	12.00
100×160 C 1800	12.40
150×150 C 1800	14.01

SLAB SLAB INCORNER JOINT

DESCRIPTION:

The slab incorner joint will be used to connect the wall panel and slab panel at the incorner position.



m (A1+A2) LC (L1+L2)	Weight (kg)
100×100 LC 400+400	4.76
100×150 LC 400+400	5.87
150×150 LC 400+400	7.00

SLAB SLAB PROP HEAD








DESCRIPTION:

Prop head to support the slab with steel props. Also it will be connected with long pin & wedge and BB bar for middle beam & end beam.
















Item PH	Weight (kg)
150 PH 300	2.50

ACCESSORIES

HOLLOW SECTION		WALLER BRACKET	
 <p>WEIGHT: 3.73KG/M DESCRIPTION: The hollow section are used to allow the horizontal straightness of wall panels and a flat wall surface (especially at the bottom) after concrete casting.</p>		 <p>WEIGHT: 0.58KG DESCRIPTION: The aluminium waller bracket use to allow the horizontal straightness of wall panels and a flat wall surface (especially at the bottom) after concrete casting.</p>	
WORKING BENCH	TIE ROD	BOLT, NUT&WASHER	
 <p>WEIGHT: 15KG DESCRIPTION: The working bench is used as the inner working platform.</p>	 <p>WEIGHT: 1.7KG/M DESCRIPTION: The tie rod will be used as an embedded anchor in order to fix the bracket /panels on the concrete surface during its installation.</p>	 <p>WEIGHT: 0.185KG DESCRIPTION: The set of accessories are used to connect panels with panels.</p>	
EMBEDDED FLAT-TIE		REUSABLE FLAT-TIE AND PVC SLEEVES	
 <p>WEIGHT: 0.064-0.286KG DESCRIPTION: The embedded flat-tie is one-time flat tie.</p>		 <p>WEIGHT: 0.158-0.711KG DESCRIPTION: The flat tie is used to joint the wall panel to the opposite side's wall panel. And the PVC sleeves will make the flat-tie reusable.</p>	

ACCESSORIES

SLAB BRACKET	WALL BRACKET	ELEVATOR BRACKET
 <p>WEIGHT: 12.5KG DESCRIPTION: The slab bracket is used as a substitute of scaffolding system, the working platform, slab platform and elevator platform will be fixed on the concrete.</p>	 <p>WEIGHT: 13KG DESCRIPTION: The wall bracket is used as a substitute of scaffolding system, the working platform, slab platform and elevator platform will be fixed on the concrete.</p>	 <p>WEIGHT: 8.5KG DESCRIPTION: The elevator bracket is used as a substitute of scaffolding system, the working platform, slab platform and elevator platform will be fixed on the concrete.</p>
PIN & WEDGE		LONG PIN
 <p>WEIGHT: 0.064&0.03KG DESCRIPTION: The pin and wedge will be used to joint the panels together.</p>		 <p>WEIGHT: 0.286KG DESCRIPTION: The long pin is used to fix the middle-beam and joint bar with wedge.</p>
SLAB TRANSFER BOX	STEEL PROPS	JOINT BAR
 <p>WEIGHT: 13KG DESCRIPTION: The slab transfer box is used to transfer panels after formwork dismantlement.</p>	 <p>WEIGHT: 11.63-17.808KG DESCRIPTION: The steel props are used to support the slab during concrete pouring and casting. It will remain under the prop head until it can satisfy the dismantling requirement.</p>	 <p>WEIGHT: 0.713KG DESCRIPTION: The joint bar is used to connect with the prop head and middle beam.</p>

PVC SLEEVE EJECTOR	REUSABLE FLAT-TIE EJECTOR
 <p>WEIGHT: 1.983KG DESCRIPTION: The PVC sleeve ejector is used to remove the reusable PVC sleeves.</p>	 <p>WEIGHT: 2.679KG DESCRIPTION: The reusable flat-tie ejector is used to remove the reusable flat-tie.</p>
Y TYPE PANEL PULLER	T TYPE PANEL PULLER
 <p>WEIGHT: 3.25KG DESCRIPTION: The Y type panel puller is used to remove the wall panels.</p>	 <p>WEIGHT: 4.86KG DESCRIPTION: The T type panel puller is used to remove the slab panels.</p>
HOLE HOOK	
 <p>WEIGHT: 0.768KG DESCRIPTION: The hole hook is used to adjust the position of panels.</p>	

ACCESSORIES

ALUMINIUM FORMWORK EDGE SEALING REINFORCEMENT SYSTEM

GETO self-developed aluminium formwork edge sealing reinforcement system is to reinforce the connection between panels at hole positions, The reinforcing plate and aluminium formwork are connected with riveting.

- Reduce the wear of pin holes
- Prolong the service life of aluminium formwork



Applicable to the 65 flat-tie system



Applicable to the 63.5 flat-tie system



*Customers can choose to use the aluminium formwork edge sealing reinforcement system according to project requirements.

QUICK-DECK FORMWORK SYSTEM

APPLICATION

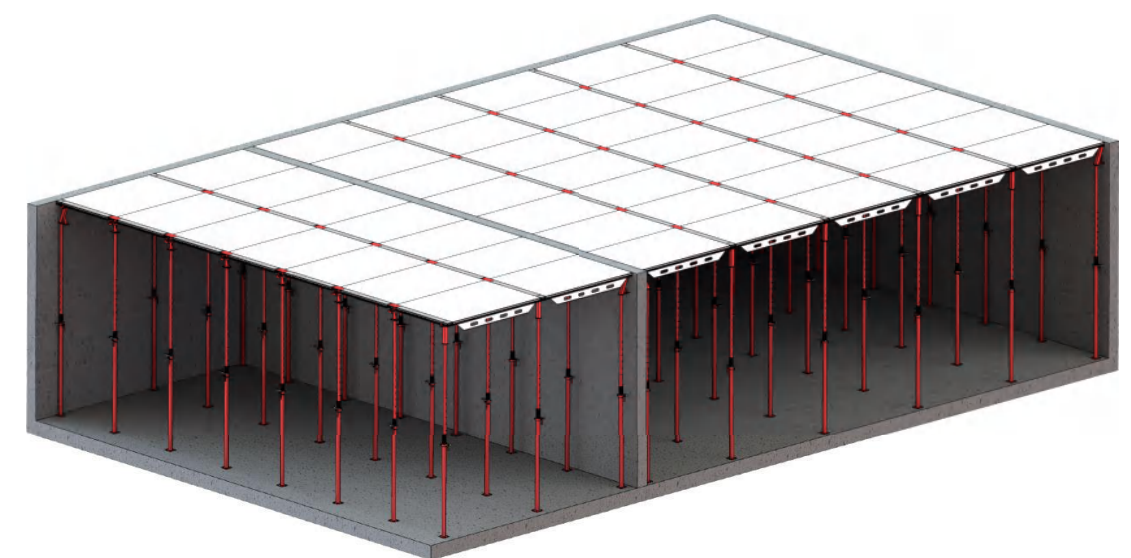
GETO Quick-Deck Formwork System is developed to construct large slab areas quickly, safely, with minimal labour. It is suitable for the construction of beamless and large-area building structures, such as carpark porch and podium. GETO Quick deck system formwork can withstand construction loads up to 250mm thickness without the need for temporary prop.

CHARACTERISTICS

Its quick installation and dismantling characteristics are realized by adjusting the height of the adjustable props below its deck formwork, where the props are mounted up for tightening and installation, and the dismantlement of the formwork only requires the conduct of manual downward adjustment of the props.

COMPONENTS

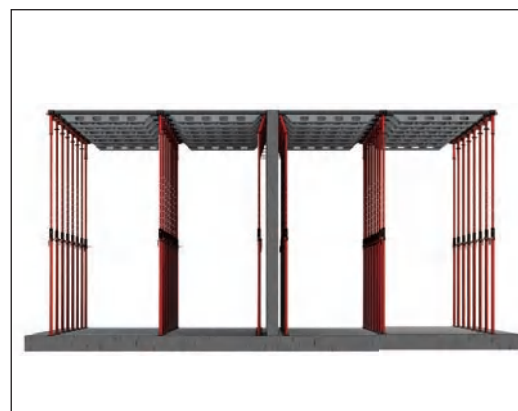
The system is composed of deck formworks, vertical props, quick-release prop heads, as well as wall-edge and slab-edge prop heads.



QUICK-DECK FORMWORK SYSTEM

ADVANTAGES

Fast Construction. All components are light enough to erect, assembly & dismantle by labour without heavy cranes. The 1.2m X 1.8m 36.77kg lightweight aluminium deck panels are easy and safe to erect using a minimum of only two workers by swiveling the panel upwards from below and locking it into our quick release prop heads. Also, the standard panels are allowed to transfer by small handcart in site which is convenient for site construction.



Easy & Compatible. GETO Quick-Deck Formwork System are allowed and easy to compatible with other aluminium formwork system, timber formwork system and precast concrete components. As quick deck formwork panels are standard sizes and not specifically designed for one project, they are able to be re-used repeatedly on new projects without additional design costs by 100%.



Intelligent Prop Head. The special prop heads and props can be separated. And the props can be used in traditional aluminium formwork system. The specially designed quick release prop head allows the panels to drop from the formed surface without disturbing the prop. The newly developed 2-stage lowering function of the quick release prop head prevents panels from accidentally falling during dismantling and speeds up the formwork dismantling process.



High Quality. The concrete surface by aluminium panel will be better than other formwork.

INSTALLATION INSTRUCTION



01-LEVELING AND STRUCTURAL LINE

The site surveyor shall based on the approved construction drawings to ensure that the structural line and level of the slab is properly set up.



02-WALL PANELS SET UP

Installation of M&E, plumbing components and steel rebar. Then the wall panels setup process shall be the inner corner wall panels, inner wall panels, flat-tie, external wall panels, pin and wedges.



03-BEAM PANELS SET UP

Setup beam panels according to the construction drawing for beam soffit panels, beam support, beam side panels, etc.



04-SLAB PANELS SET UP

Fixed the slab corner panels on the top of wall panels. Then the slab panels setup process shall be middle beam, prop head, end beam, slab panels, etc.



05-KICKERS SET UP

Kickers are fixed on the external wall panels with kicker screws before concrete pouring. The function of kickers is to support the external wall panels for next floor.



06-STAIRCASE PANELS SET UP

The staircase panels setup process shall be staircase soffit length, step panels, step angles, etc.



07-INSTALLATION OF M&E,REBAR

Installation of M&E, plumbing components, steel rebar and slab box-out.



08-INSPECTION AND ACCEPTANCE

All the vertical panels shall be fixed in position and the external corner should be checked. This will determine if further action is required to control the deviation.

NEXT PAGE

INSTALLATION INSTRUCTION



09-CONCRETE POURING

Concrete pouring is distributed evenly throughout the wall section before commencing to cast the slab areas.



10-WALL PANELS DISMANTLEMENT

The first wall panel will be the most difficult to remove out from wall. And it's forbidden to remove it violently.



11- BEAM PANELS DISMANTLEMENT

Remove all pins and wedges from the section of beam side. Then, remove all the beam panels.



12- SLAB PANELS DISMANTLEMENT

After remove all pins and wedges, middle beam and end beam will be easily removed. BTW, the prop head and steel props must not be removed to support the floor slab.



13- KICKERS DISMANTLEMENT

The wall panels are removed to disconnecting the lower kicker from the adjacent formwork and prepared for reuse.



14- FLAT TIES & PVC SLEEVES

Flat ties are used to ensure the wall thickness and fixed the wall panels. PVC sleeves are used to protect the flat tie so as to reuse it. Both of it can be removed by special tools.



15- PANELS CLEANSING

All components shall be cleaned after dismantlement for a better quality in next floor.



16- TRANSFER PANELS

Transfer all panels through Slab box to large open space. After that, it can be filled with second-time concrete.

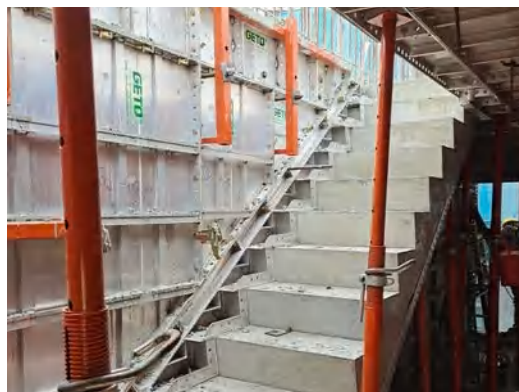
PROJECT REFERENCES



TECHNICAL SOLUTIONS

TWO TYPICAL FLOOR DESIGNS SHARE ONE ALUMINIUM FORMWORK SET IN ONE TOWER

For a tower with two types of typical floor design, our solution is to offer one set of aluminium formwork system for reuse and turn over throughout the tower.



PODIUM AND TYPICAL FLOORS SHARE ONE ALUMINIUM FORMWORK SET IN ONE TOWER

With rich experience and professional strength accumulated from the past, we can offer one set of aluminium formwork system that could be turnover and reused between non-typical floors and typical floors.



TECHNICAL SOLUTIONS

CUSTOMIZATION FOR PODIUM WITH LARGE-SIZE FLAT DECK STRUCTURE AND NO BEAMS

For construction projects that consist of huge and flat structure without beams, we will introduce them to use Quick-Deck System with 1200 x 1800mm in its formwork size to build podiums.



SKYSCRAPERS WITH ALUMINIUM FORMWORK AND SELF-CLIMBING PLATFORM SYSTEM INTEGRATED

By offering integrative design of aluminium formwork system and self-climbing platform system, we can contribute to improving the efficacy of structural work progress for superhigh skyscrapers. Meanwhile, GETO customizes design for several connecting points of aluminium formwork system and self-climbing platform system, such as offering extra strengthening accessory parts and steel frame structure.



TECHNICAL SOLUTIONS

ALUMINIUM FORMWORK SYSTEM TURNOVER FOR TERRACE HOUSE PROJECTS WITH MIRROR-LIKE STRUCTURE AND PARTY WALLS

Based on the project characteristics of terrace house project and the budget allocation of relevant client for the number of formwork sets, we proposes technical solution for aluminium formwork system turnover that takes mirror-like structure and party walls into account.



UNIQUE DESIGN THROUGHOUT THE WHOLE BUILDING

Even if buildings with unique designs have great floor height, more changes, and complex structures, including round columns, arc-shaped beams, decks with special angles, etc, we can still manage to design it with zero-flaw standard by utilizing its self-developed Intelligent Formwork Modulation System.



TECHNICAL SOLUTIONS

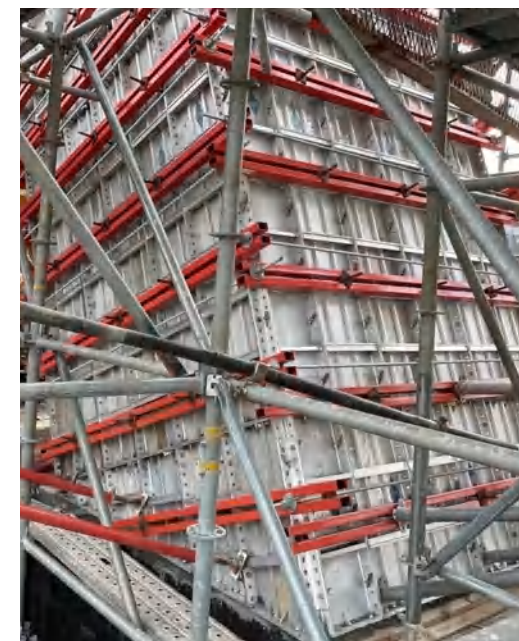
ALUMINIUM FORMWORK USED WITH OTHER FORMWORK SYSTEM

We propose solutions of aluminium formwork used with other formwork system to our clients, such as aluminium formwork with timber, aluminium formwork with precast components, as to facilitate our clients in saving up construction material and labour cost, which consequently solve the pain point of our clients in bearing high cost to procure extra set of formwork for non-typical floor construction.



THE BASEMENT AND TYPICAL FLOORS OF THE PUBLIC BUILDINGS COMPLETELY CONSTRUCTED BY USING ALUMINIUM FORMWORK

With the principle of customer-centric spirit, we maximized the turnover and utilization rate of the aluminium formwork for the public buildings like station, school, etc, by modifying the architectural drawing of the project. The basement and typical floors of the public buildings was completely constructed by using aluminium formwork, increasing construction efficiency.



GETO PROJECTS

Our cooperation covers six continents—Asia, Europe, North America, South America, Africa, and Oceania—and more than 50 countries and regions, including 35 Belt and Road countries. We have successfully completed more than 400 quality overseas projects.



PROJECTS IN ASIA

HIGH-RISE RESIDENTIAL BUILDING



PROJECTS IN ASIA

TERRACED VILLA



OFFICE BUILDING



PROJECTS IN ASIA

INDUSTRIAL BUILDING



PROJECTS IN MIDDLE EAST

VILLA



PROJECTS IN MIDDLE EAST

APARTMENT



COLUMN



PROJECTS IN MIDDLE EAST

FORMWORK PLUS: EXTERNAL WALL INSULATION BOARD



PROJECTS IN AMERICAS

RESIDENTIAL BUILDING



PROJECTS IN AMERICAS

APARTMENT



VILLA

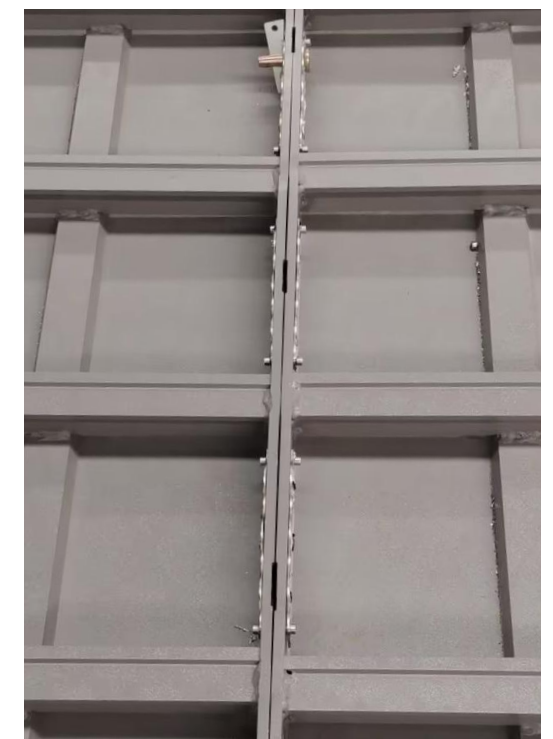


PROJECTS IN AMERICAS

HOTEL



FORMWORK PLUS: EDGE REINFORCEMENT SYSTEM



GETO Group

Headquarters:

Greater Bay Area—No. 13 Heqing Road, Tsuihang New District, Zhongshan City, Guangdong Province

Southern China Production Base I :

Cuishan Lake Science and Technology Park, Kaiping, Jiangmen City ,Guangdong Province

Southern China Production Base II :

Huizhou Industrial Transfer Industrial Park, Huizhou City, Guangdong Province

Eastern China Production Base I :

Guangchang Industrial Park, Fuzhou City, Jiangxi Province

Central China Production Base:

Hi-tech Industry Development Zone, Xianning City, Hubei Province

Northern China Production Base:

China Aluminium Industrial Park, Linqi, Weifang City, Shandong Province

Southwest China Production Base:

Modern Manufacturing Industrial Park, Tongnan High-Tech District, Chongqing City

Northwest China Production Base:

The Circular Economy Park, Anding District, Dingxi City, Gansu Province

Hainan Production Base:

Gold Medal Port Industrial Park, Lingao County, Hainan Province

ASEAN Production Base:

Negeri Sembilan, Malaysia

Singapore Production Base :

West Region, Singapore

Saudi Arabia Production Base :

Riyadh, Saudi Arabia

Contact

Sales Hotline: 0086-760-88589004

E-mail: geto_market@geto.com.cn

Website: www.getoformwork.com

20250421V1

